



高压电缆分接箱 High-voltage Cable Branching Switchgear

DFW □-12



天仑电气 - 为您提供一流的电力系统解决方案
Tianlun Electric, provide you with first-class power system solution

宁波天仑电气有限公司
NINGBO TIANLUN ELECTRIC CO., LTD

宁波市北仑区江南中路 10 号
No. 10, jiangnan Road , Beilun, Ningbo, China
传真 (Fax): +86-0574-8619 3383 网址 (Web): www.cn-tianlun.com

联系电话 (TEL)
86-574-8619 3396 (中国)
86-574-8619 3389 (International)



企业官网
Website qr code



微信公众号
Wechat qr code

本型录文字、参数规格及资讯仅供参考。产品以实物为准，内容亦会随时更新。本公司样本及商标版权所有，翻录必究。型录所有机型为我司专利产品，仿冒必究。
The text, specifications and information of catalogue are for only reference. Products depend on the actual model, the content will be updated without notice. The company sample and trademark copyright reserved, and counterfeiting is not allowed. all the models for our patented products, copying is not permitted.

宁波天仑电气有限公司
NINGBO TIANLUN ELECTRIC CO., LTD



公司简介 Introduction

宁波天仑电气有限公司(以下简称公司)成立于2001年1月。

公司坐落于浙江宁波,毗邻“东方大港”北仑港。拥有10000平方米的研发生产基地,年产值超亿元,目前有80多名年轻朝气的员工,其中60%为本科学历。公司是集研发、生产、销售、服务于一体的高新技术企业,致力于打造高品质的智能化、节能型、定制模式的输变电设备产品。

公司目前有符合国际及国内标准3大类18种产品,包括24kV中置式开关柜及环网柜,12kV中置式开关柜及环网柜,440V固定式分隔柜,抽屉式开关柜,预装式变电站,低压母线槽(合作生产),10kV变压器(合作生产)等等,同时部分为ABB、Schneider的授权产品。公司立足于浙江,为很多大型的制造企业、房产开发、学校、港口等用户提供了许多高质量的产品和服务,同时也出口到东非、北非及东南亚国家,获得了客户的一致满意。

公司严格执行ISO9001质量保证体系,标准化体系,安全生产标准体系,国家CCC认证体系。坚持持续提升产品质量,追求零缺陷产品,全心全意服务用户的质量方针,坚持以人为本,鼓励创新,精细化的管理理念,坚持以感恩在心为核心价值观,为我们的用户提供最好的产品和服务。

Ningbo TIANLUN Electric Co., Ltd was established in year 2001, January. It is located in Ningbo, near Beilun port, which is called "oriental grand port". TIANLUN has 10000-square-meter researching and developing workshop and annual output value exceeds 100 million. TIANLUN has a professional team composed of 80 innovative staff, most of them have bachelor's degrees. TIANLUN is a company that integrates researching, developing, selling and service. Our purpose is to create high quality electric equipment product which is intelligentized, energy-saving and customized.

TIANLUN mainly have 18 types of products which belong to 3 majors as follow: 24 kV Intermediate switchgear and Ring Main Unit Switchgear, 12kV Intermediate Switchgear and Ring Main Unit Switchgear, 440V Fixed Isolated Switchgear, Preparatory Transformer Substation, Low Voltage Bus Duct (coproduction) and 10kV transformer (coproduction). Some products are Licensed by ABB and Schneider. TIANLUN have been providing high quality products to large manufacture enterprise, real estate, school and port constructions. At the mean time, our product are exported to Africa and southeastern countries and win satisfaction from the overseas customers.

TIANLUN strictly stick to ISO9001 standard system, standardization system, safety standard system and CCC authentication system. Our quality policy is producing good and zero defect product, having customers well served. Our management policy is people orientation, creation encouragement and high-effective system. TIANLUN always hold a thankful heart and provide top-level product with best service.

概述

Overview

电缆分接箱是电缆传送电能的中转站,用于户外对电缆线路进行联络、分接、分支、接续或转换。具有联结方式简单、方便、灵活、全绝缘结构、耐腐蚀、抗污染、安全可靠等特点。

DFW □ -12 系列电缆分接箱是我厂为配合 10kV 电力网电缆系统而设计的新型供电设备,广泛适用于 10kV 系统中的电缆节点处,作为电能的接受和分配之用。该系列电缆分接箱结构独特、外形美观,特别适用于城市街道、住宅小区、高层建筑、机场、码头等建筑面积小且对环境要求又相对较高的场所。

The Cable Branching Switchgear is the transfer station for cable to transmit electric energy, used for connecting, shunting, branching, continuing or transferring cables outdoors. It features simple, convenient, and flexible connecting ways, full insulation structure, corrosion resistance, anti-pollution, high safety and reliability.

DFW □ - 12 Cable Branching Switchgear is a new power supply equipment designed by us for being used with 10kV power grid cable system, which is widely used at cable joints in 10kV system for receiving and distributing the electric energy. The cable distribution box of this series has unique structure and aesthetical appearance, especially suitable for city streets, residential quarter, high-rise building, airport, and wharf and other sites with small building area and serious requirements for the environment.

型号含义

Model Description



正常使用条件

Normal Operating Conditions

- | | |
|---------------------|--|
| A、海拔不超过 1000m; | A. Altitude not higher than 1000m; |
| B、环境温度 -25℃ ~ +40℃; | B. Ambient temperature - 25℃ to +40℃ ; |
| C、风速 ≤ 34 m/s; | C. Wind speed ≤ 34m/s |
| D、无经常性的剧烈振动的场所。 | D. No frequent severe vibrations |



ISO9001-2000



CCC 认证



WSC 北京世标认证中心



DFW □-12 主要技术参数 Main Parameters of DFW □-12

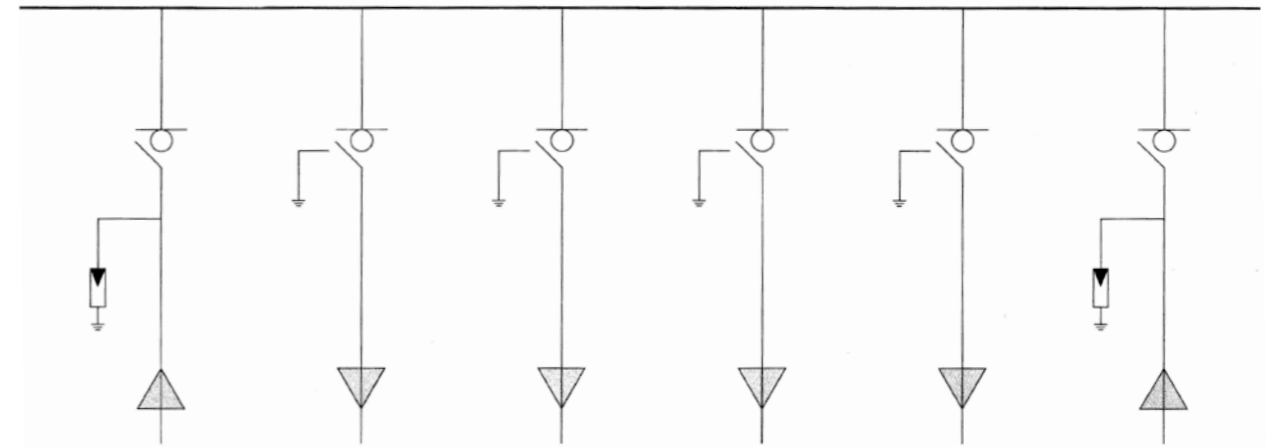
项目 Item	单位 Unit	数据 Parameters
额定电压 Rated voltage	kV	12
额定电流 Rated current	A	630
额定短时耐受电流 Rated short-time withstand current	kA/s	25/2
额定峰值耐受电流 Rated peak withstand current	kA	63
额定短路关合电流 Rated short circuit making current	kA	63
1min 工频耐受电压 1 min power frequency withstand voltage	kV	42/48
雷电冲击耐受电压 Impulse withstand voltage	kV	75/85

FN26-12 六氟化硫负荷开关主要参数 Main Parameters of FN26-12 Sulfur Hxafluoride Load Switch

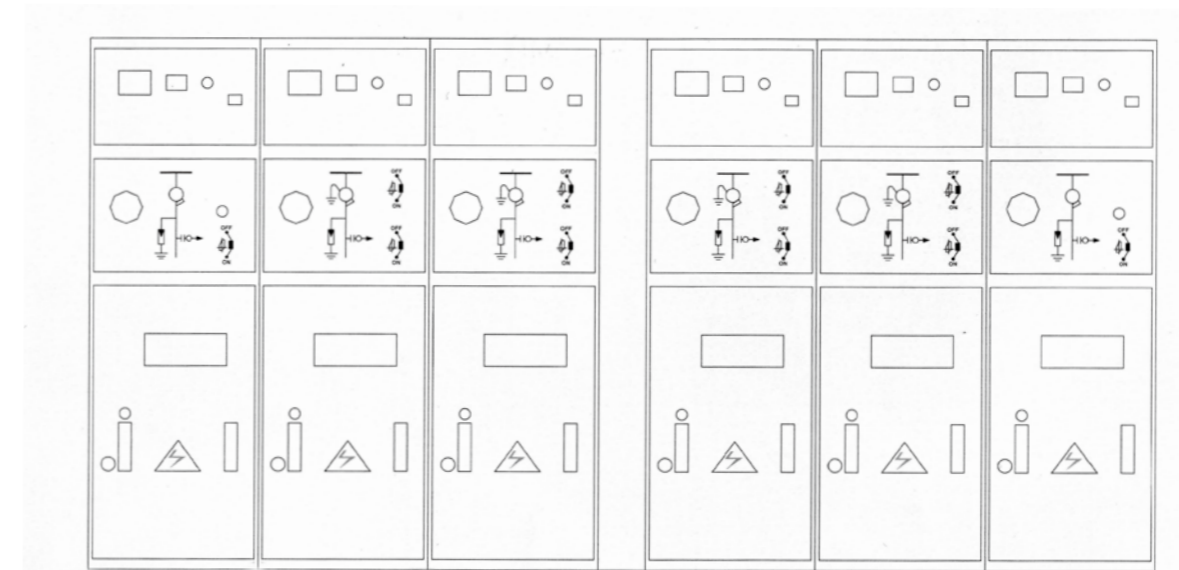
项目 Item	单位 Unit	数据 Parameters
额定电压 Rated voltage	kV	12
额定电流 Rated current	A	630
额定短时耐受电流 Rated short-time withstand current	kA/s	25/2
额定峰值耐受电流 Rated peak withstand current	kA	63
额定短路关合电流 Rated short circuit making current	kA	63
1min 工频耐受电压 1 min power frequency withstand voltage	kV	42/48
雷电冲击耐受电压 Impulse withstand voltage	kV	75/85
机械寿命 Mechanical lifetime	次 /times	10000
SF6 气体压力 (20℃时表压) SF6 gas pressure (gage pressure at 20℃)	MPa	0.04
年漏气率 Annual air leak rate		≤1%

内柜为 XGN15-12(F) 型六氟化硫环网柜组合 The inner cabinet is a combination of XGN 15-12(F) Sulfur Hxafluoride ring main unit

一次方案图:
Primary Schematic Diagram:



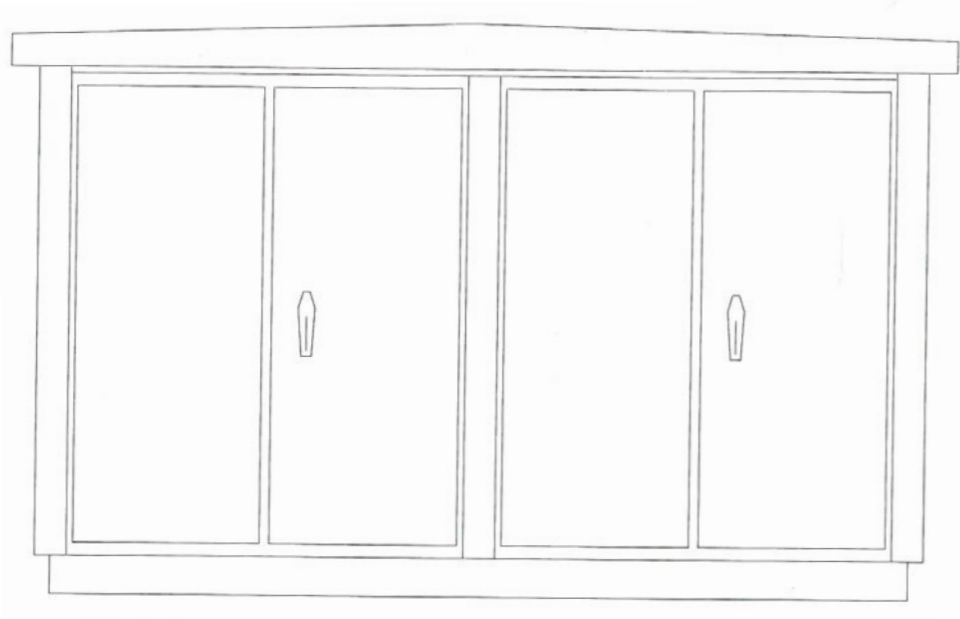
内柜
Inner cabinet:



封板样式
Styles of cover plate
外形尺寸
Overall dimensions

全封 Complete enclosing	半封 half enclosing	半封 Complete enclosing	半封 half enclosing	半封 half enclosing	全封 Complete enclosing
500x940x1635	500x940x1635	500x940x1635	500x940x1635	500x940x1635	500x940x1635

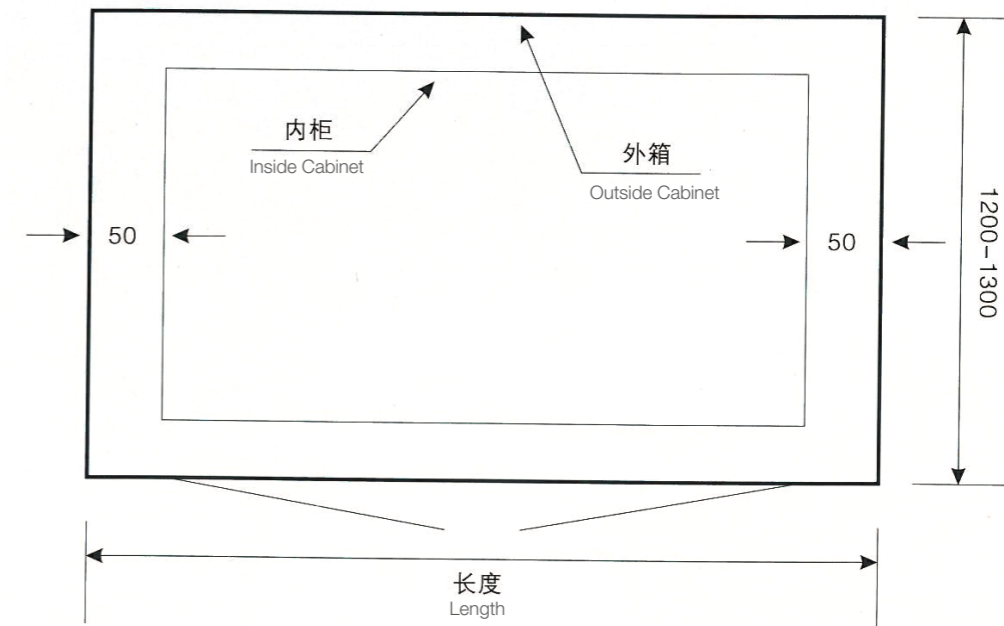
外箱 Outer cabinet



分接箱外形尺寸 (长 × 深 × 高) : 3800x1500x2040
Overall dimensions of distribution box (L X D X H):3800x1500x2040

注: 按分接箱组合时, 六氟化硫环网柜数量不同, 分接箱外形尺寸的长度亦按环网柜数量变化而改变。
Note: if the combination is made based on distribution box, the number of Sulfur Hxafluoride ring main units will vary. The length of the distribution box overall dimensions vary with the number of ring main units.

电缆分接箱底座规格 Cable Branching Switchgear Base Specifications



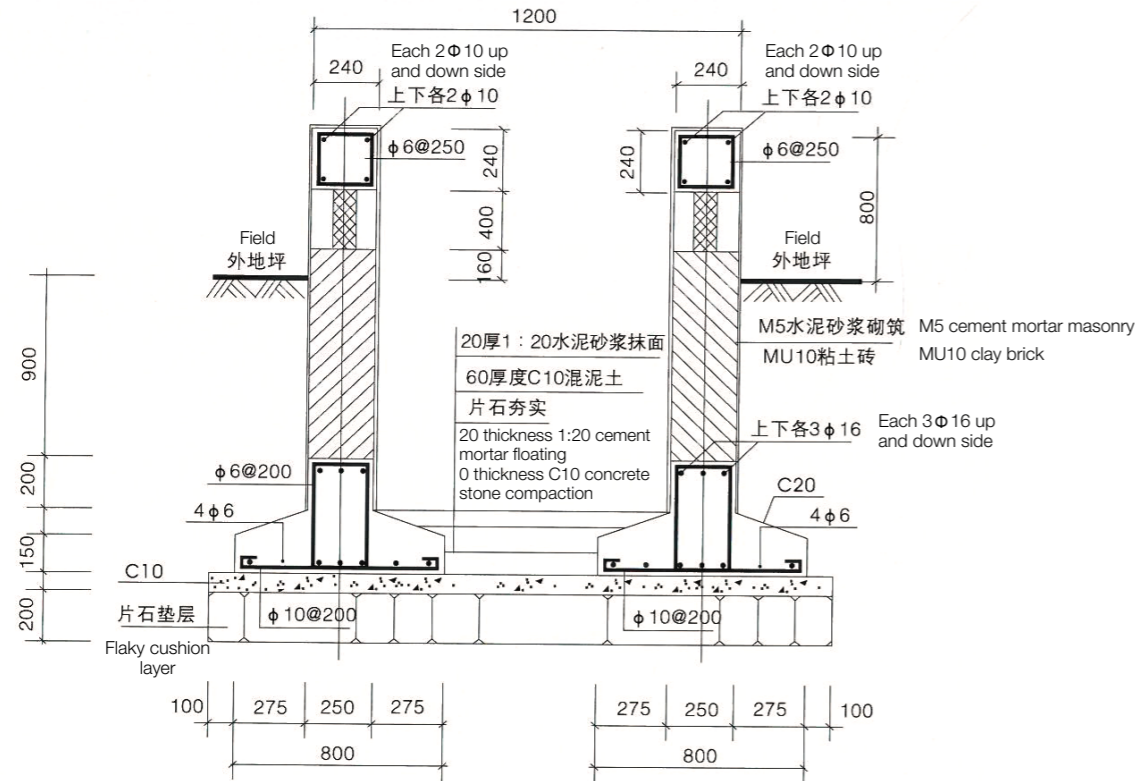
不同方案的电缆分接箱底座尺寸如下表:

Table of Dimensions of Cable Branching Switchgear base in Different Schemes is listed as below:

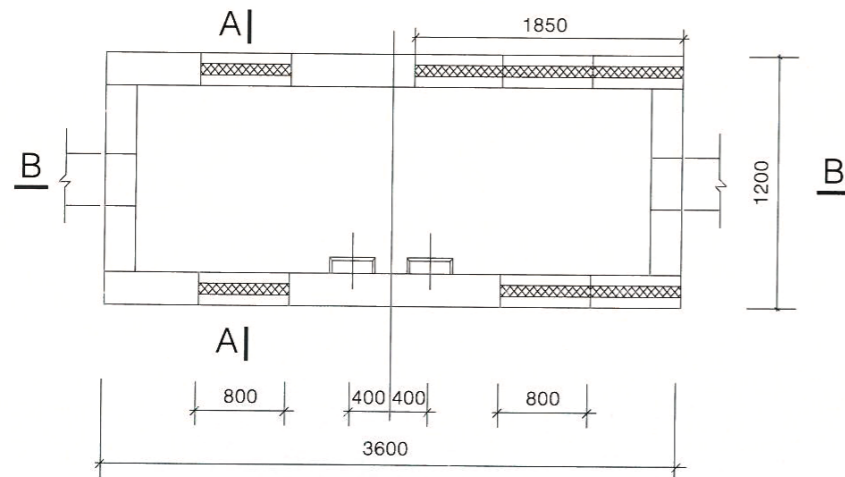
环网柜型号 Model of ring main unit	XGN15-12		ASGN-12	
	长 Length	宽 Width	长 Length	宽 Width
方案一 (4 台) Scheme I (4 boxes)	2400	1300	2400	1200
方案二 (6 台) Scheme II (6 boxes)	3600	1300	3600	1200
方案三 (8 台) Scheme III (8 boxes)	4600	1300	4600	1200

电缆分接箱安装基础

Cable Branching Switchgear installation base



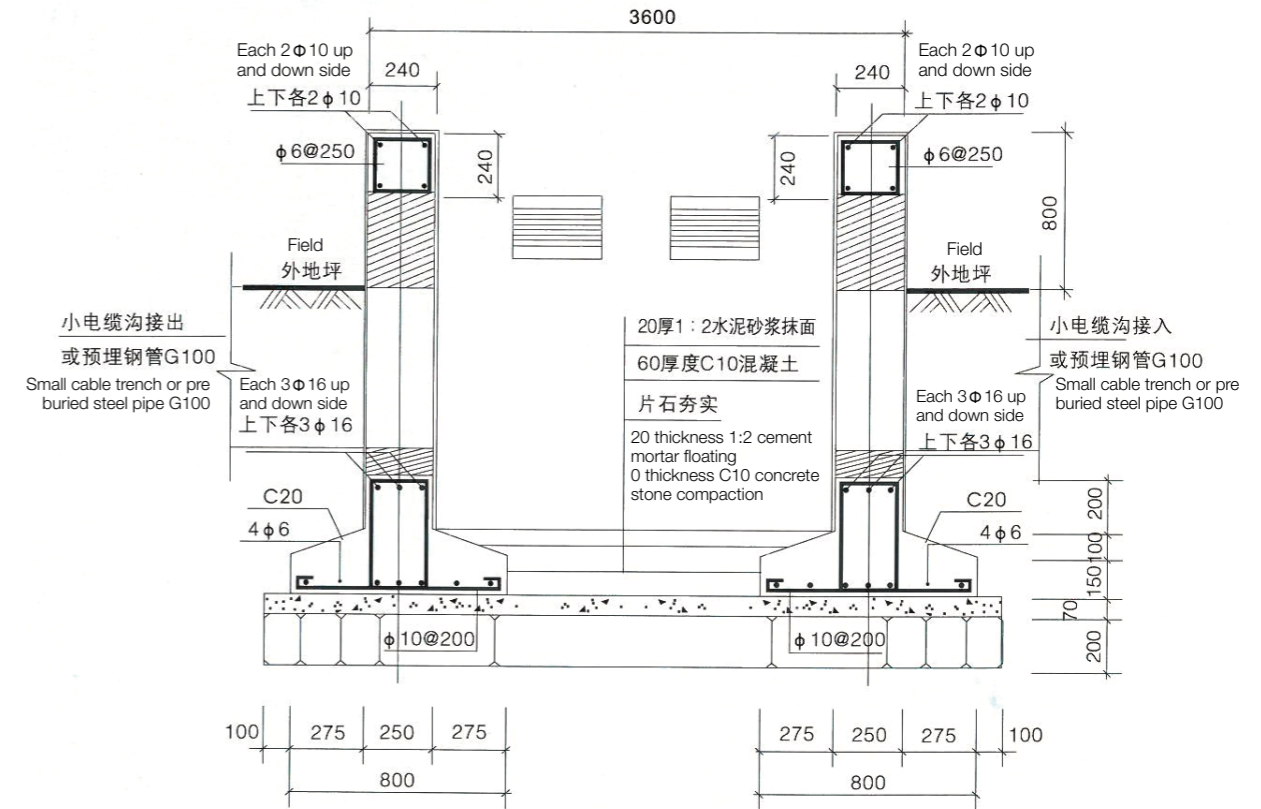
A-A



电缆分接箱基础图
Outside grade level

电缆分接箱安装基础

Cable Branching Switchgear installation base



B-B

说明

1. 图中尺寸可以根据实际情况作调整。
2. 环网站基础面预埋钢板 M-1:120X120X8, 锚筋 4-Φ6, 长 120, 钢板间距 0.8m, 用于环网站固定。
3. 基础露出地面贴面砖或涂外墙涂料。
4. 环网站基础需设置 Φ150 混凝土排水管至邻近窰井。
5. 基础需清除杂填土, 施工在持力层上。
6. 未注砼强度等级为 C20, 垫层为 c10。

Explain

1. the size can be adjusted according to the actual situation.
2. ring web based embedded steel surface M-1:120X120X8, anchor bar 4-Φ6, length 120, plate spacing 0.8m, ring for fixed site.
3. based out of the ground tiles or painted exterior wall paint.
4. ring set with Φ150 web based concrete drainage pipe to the nearby manhole.
5. based on the need to remove the miscellaneous fill, construction on the bearing layer.
6. the concrete strength grade is C20, the cushion is c10.

备忘录 Memo

备忘录 Memo
